



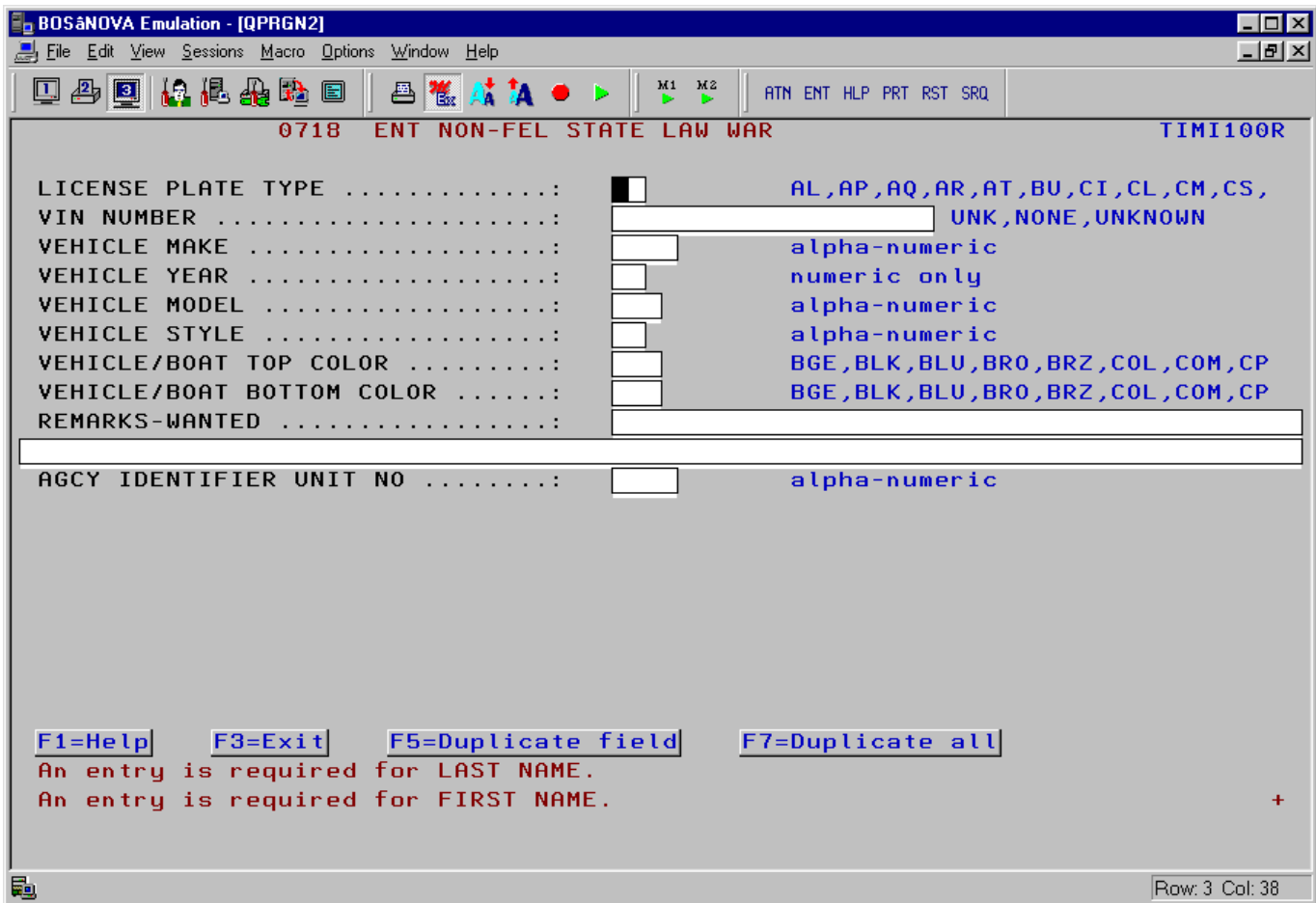
Paragon Software International, Inc.



November 11, 2005

### TIME Interface Enhancements

Several new features have been added and some changes to the way the program handles transactions. Many of these changes have been sought by the user community. In the text that follows are descriptions of each of the changes or enhancements.



## **C.R.I.M.E. Release Announcement Letter**

The TIME interface transaction entry screen shown above has been enhanced for easier use of ENTRY transactions like the warrant entry screen shown here. Vehicle default information was previously programmed to fill in all instances of plate type, state, and plate year with defaults. While this is a welcome feature on query transactions, it is bothersome on all other transactions. The TIME interface transaction entry screen will now only fill the these vehicle information defaults on query transactions. This will leave these fields empty on the ENTRY type transactions.

Many experienced users of the TIME interface transaction entry screen will use the DUP key to recall the same information from the last transaction entered onto the new transaction being worked on. This DUP key is a very useful tool when entering several transactions for the same person. Simply pressing the DUP key once in each field desired, brings back the information from the last transaction. This functionality has been replicated to the F5 key. New comers are not always trained about all the special keys available (like DUP) so we have added the F5 key as another more obvious way to perform this function. Of course the F7 (duplicate all) key will still duplicate all applicable fields from the previous transaction.

The TIME interface transaction entry screen has been changed to process large comment fields better. Previously, the large comment fields would not re-display after scrolling through a multi-page transaction. The comments were not lost, but did not re-display when scrolling back to the page they were entered on. The large comment fields will now be re-displayed as the user scrolls back and forth through a TIME transaction.

The TIME interface transaction entry screen has been enhanced to enable the duplication of large comment fields. Large comment fields may now be copied from one transaction to another using any of the DUP, F5, or F7 keys which duplication previous information onto the current form.

The TIME interface transaction entry screen has been changed to not limit or strict the defined size of a large comment field. Many of the TIME transactions have a 256 character comment field defined. This exceeded the previous programs ability to store this information.

The TIME interface transaction entry screen has been enhanced to be able to process large comment fields upto eight times the size of the fields presently used by TIME. This has been changed to accommodate any future transactions which may attempt to use very large comment areas.

The maximum transaction size the TIME interface transaction entry screen is able to process has been increased five fold. This enhancement has been done to accommodate any future transactions which may attempt to use this space.

The TIME interface transaction entry screen has been changed to correct a problem if a multi-line comment field ended up being the last field on the bottom of a screen. Large multi-line comment fields that do not fit entirely on the bottom of a particular page will be moved to the top of the next page so the entire comment can be seen and edited at a glance.

The TIME interface transaction entry screen has been enhanced to scroll through a multi-page transaction more fluidly. This movement between pages will start with the next unseen field for the next page and will not redisplay the last line from the previous page. Creating clean page cut-offs should improve comprehension of a particular transaction's requirements.